

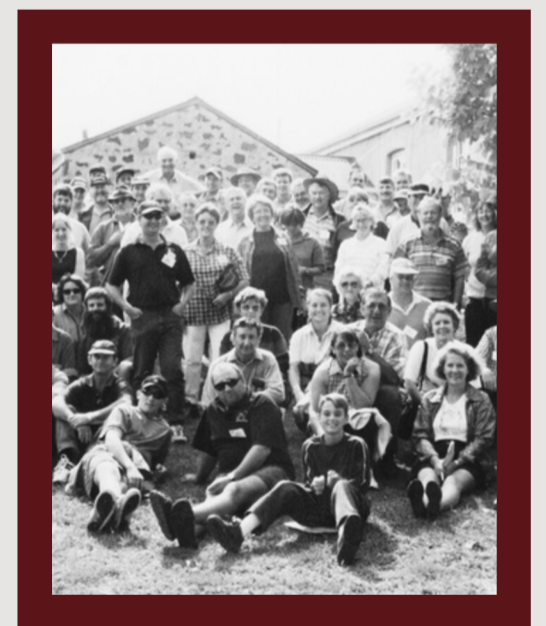
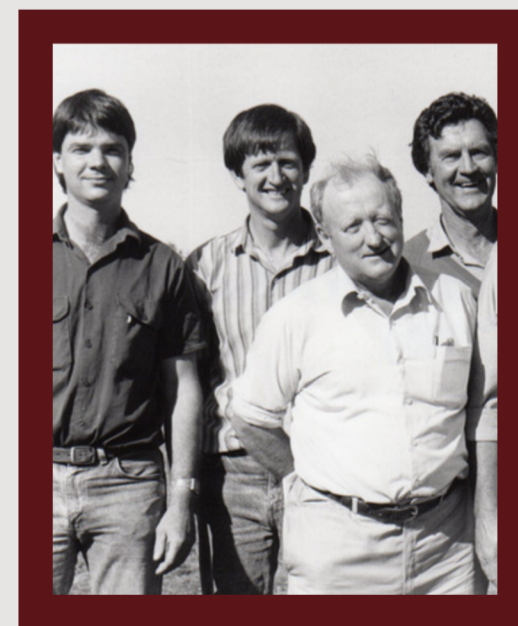
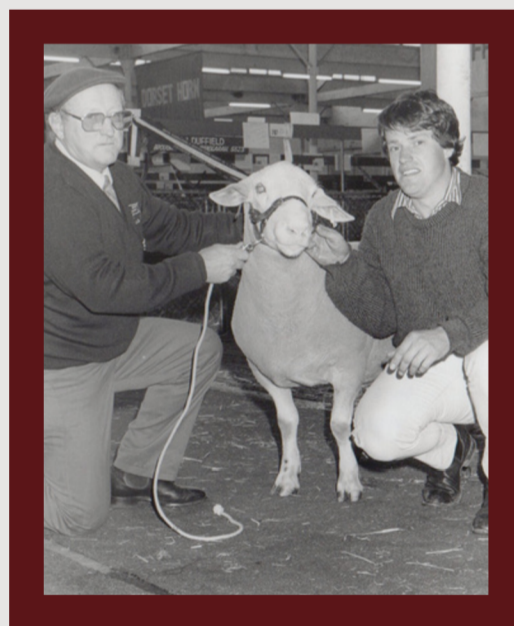
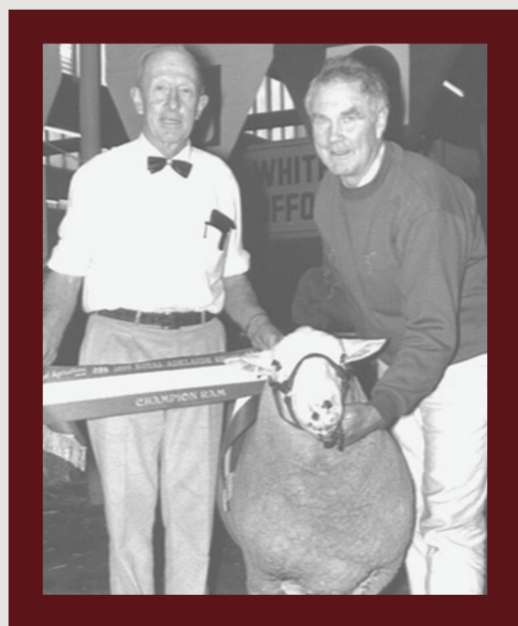
# Celebrating 40 YEARS OF THE ASSOCIATION

## NATIONAL CONFERENCE PROGRAM OVERVIEW

### SUNDAY 23 FEBRUARY

- **From 3pm | Registration**
  - Adelaide Hills Convention Centre
  - 145A Mount Barker Road, Hahndorf SA
- **6.30pm | 40 Year Celebration Dinner**
  - Semi-Formal
  - Adelaide Hills Convention Centre

*...a journey through the decades*



1985 - 1995

1995 - 2005

2005 - 2015

2015 - Current

**Contact us for more information**

 [whitesuffolk@gmail.com](mailto:whitesuffolk@gmail.com)

 [whitesuffolk.com.au](http://whitesuffolk.com.au)



# MONDAY

- **9am | Breakfast**

- Adelaide Hills Convention Centre

- **10am | Sessions**

- **Decoding DNA: Understanding Its Timeline from Beginning to End**

Genetic Insights: Understanding the Role of DNA in Sheep Breeding

**Jason Ledger, Xytovet**

Stop guessing your way to success

**Tim Johnsson, Breed Elite**

Genetic Data Analysis: Enhancing Breeding Decisions Through DNA Insights

**Peta Bradley & Marnie Hodge, Sheep Genetics**

Starting Your Journey with DNA Breeding - Our Story

**Alistair & Andrew Michael, Leahcim White Suffolk Stud**

- **12.30pm | Lunch**

- Adelaide Hills Convention Centre

- **2pm | Electives**

- **Grunthal Ultimate Tasting Experience**

- This is the ultimate tasting experience! Enjoy a bit of everything, with one Grünthal gin and tonic, two Grünthal beers and two Hesketh wines served with five matching cheeses, focusing on Udder Delights.
- Grunthal | 827 Mount Barker Rd, Verdun

- **Beerenberg Experience**

- Strawberry Patch Guided Tour and strawberry picking experience plus the ultimate afternoon tea of Scones/Jam/ Cream / Tea and Coffee
- Beerenberg | 2106 Mount Barker Rd, Hahndorf

- **OR**

- **Free-Time**

- **6pm | BBQ Dinner**

- Adelaide Hills Convention Centre



# TUESDAY

- **7.30am | Breakfast**

- Adelaide Hills Convention Centre

- **8.30am | Bus to Depart for Field Trip**

- Thomas Food International
- Transport included

- **12pm | Lunch**

- Adelaide Hills Convention Centre

- **1pm | Annual General Meeting**

- **1.30pm | Sessions**

- **Benchmarking for Tomorrow: Driving Your Business Forward**

Part 1:

Innovative Strategies for Sustainable Growth in Sheep Farming

Part 2:

Financial Management, Succession and Goal Setting for your Future  
**RLS Agribusiness**

- **3pm | Close of Conference**

- **3.30pm | Hahndorf Mini Golf Competition**

- Golf Clubs will be provided
- Participants to coordinate own transport
- Hahndorf Mini Golf | 17 Mount Barker Rd, Hahndorf SA

- **From 6pm | Dinner**

- Hahndorf Inn | 35 Mount Barker Rd, Hahndorf SA 5245
- Participants own expense